

QUICK INSTALLATION GUIDE

Version 1.0



**Aztech DSL600E(C)
Ethernet Modem**

Package Contents

- 1 x DSL600E(C) Ethernet Modem
2. Quick Installation Guide
3. User Manual (Found in CD)
4. Utility CD
5. 1 x RJ-45 Straight Cable
6. 1 x Telephone Cable (RJ-11)
7. 1 x Power Adaptor (9V)
8. 2 x POTS Splitter

Minimum System Requirements

- Windows 98SE/ ME/ 2000/ XP
- MAC 9.x to 10.x
- 64 MB RAM for Win 98 SE/ ME
- 128 MB RAM for Win XP/ 2000
- 64 MB or 128 MB RAM for Mac
- 4 x CDROM Drive
- Ethernet Port (LAN Card)

For Technical Support
Please contact
Aztech Systems Ltd
support@aztech.com
Tel: 6749-2062

Support Hotline Hours
Mon-Fri, 9am to 6pm
(Except public holidays)

FOR WINDOWS USERS:

Important

Before you run the utility CD, please make sure that PC's Network Card TCP/IP Properties and the Internet browser proxy is set accordingly. It is also assumed that the computer/ notebook has the network card already installed.
(Note: Settings for TCP/IP may be optional as the DSL Modem has a built-in function that allows the user who has a Static IP Address on the network card to access either the DSL Modem configuration page or surf web)

1a. Configure TCP/IP settings for Win 98SE/Me

- Windows Desktop -> right click Network Neighborhood for Win98SE / Network Places for Win ME -> Properties
- "Network" window -> click the Configuration tab -> scroll down to select and double click TCP/IP xxx (xxx refers to the model of the Ethernet Network Card connected to the DSL600E(C))
- "TCP/IP Properties" window -> select IP Address tab -> Select Obtain an IP address automatically -> click DNS Configuration tab -> click Disable DNS -> Click OK

1b. Configure TCP/IP settings for Windows 2K/XP

- Windows Desktop-> right click on Network Place icon, scroll down to select Properties
- "Network & Dial-Up Connection" window -> click Local Area Connection -> scroll down to select and double click Internet Protocol TCP/IP
- "Internet Protocol (TCP/IP) Properties" -> select Obtain an IP address automatically -> select Obtain DNS server address automatically -> click OK

2. Settings for Internet Browser Proxy:

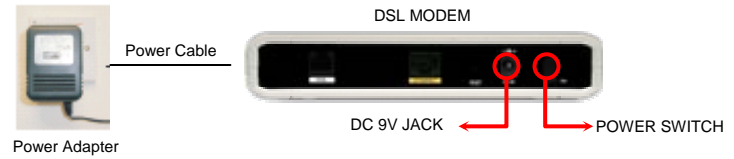
- Windows Desktop-> right click on Internet Explorer (IE) icon, scroll down to select Properties
- "Internet Properties" window -> click Connections tab -> Select Never dial a connection -> click LAN Settings ...
- "Local Area Network (LAN) Settings" window -> remove the tick for the option for the Automatic configuration -> remove the tick for the option box for Proxy Server -> click OK -> click again to exit from "Internet Properties" window

3. For Singnet Filtering Service User (e.g. Family On-line)

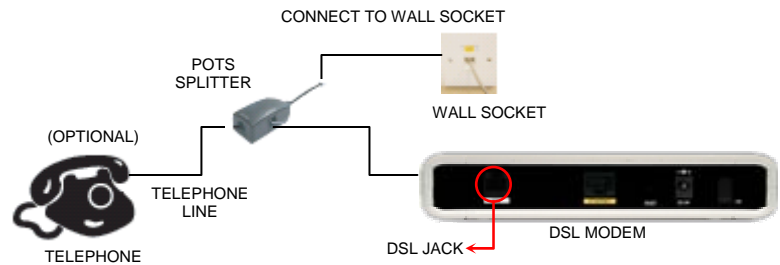
- Windows Desktop -> right click Internet Explorer (IE) -> click Properties
- "Internet Properties" window -> click Connections tab Select Never dial a connection -> click LAN Settings kkkk
- Click to put a tick for Automatically detect settings
- Click to put a tick for "Use a proxy server for your LAN ..."
-Type filter.singnet.com.sg in "Address" field ->
Type 8080 in "Port" -> click Advanced
-Proxy Settings window -> click to put a tick for "Use the Same Proxy Server for all protocols"
-Type 192.168.1.1 in the space provided under "Exceptions". Click OK to exit "Proxy Setting" -> click OK to exit "LAN Settings" -> click OK again to exit "Internet Properties"

Step 1 : Hardware Setup

- 1a** Connect the power adapter to the power socket and the other end to the DC 9V jack of the DSL Router. Switch on both **POWER** adapter and the **DSL MODEM**.



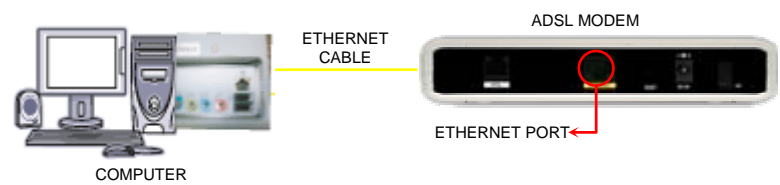
- 1b** Connect one end of the telephone line to the modem labeled **ADSL** and the other end to the pots splitter labeled **MODEM** (optional) to connect a physical telephone, use another telephone line connect from the telephone to the pots splitter labeled **PHONE**.



Note:

The picture illustrates the connection to a single telephone or fax machine. If you have another telephone or fax machine connected to other telephone wall socket (sharing the same line), please attach another POTS Splitter to telephone wall socket to prevent DSL signal from getting disconnected while surfing.

- 1c** Connect one end of the Ethernet cable to the Ethernet port of the computer and the other end to the **ETHERNET** Port of the DSL Modem.



Step 2 : Configuring Using Setup Utility

2a FOR WINDOWS 98SE/ME/XP/2000 USERS

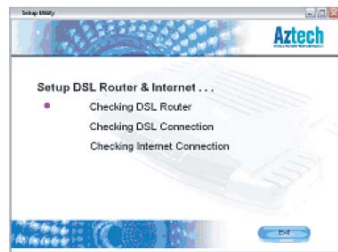
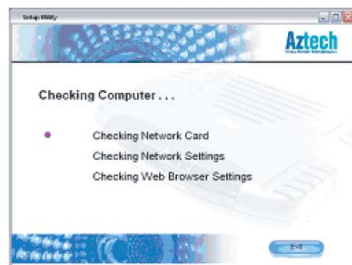
IMPORTANT: Insert the Utility CD into the CD-ROM. The utility will auto-run and display the main menu. Select Setup Wizard button to proceed.
(Note: If doesn't auto-run, then go to the CD-ROM drive and execute the Setup.exe)

FIREWALL REMINDERS:

If your computer is installed with a firewall, it might prompt that the setup launcher is trying to access the internet, just click on Allow or Grant Access to proceed with setup. If the firewall does not give you the prompt and utility informed you that your computer is with a firewall, exit the utility and try disabling the firewall rerun the utility CD. Enable the firewall after completing the setup.



- 2b** Setup Wizard will start to check and configure the PC and DSL Router. In event the Wizard prompts error, please follow the guide to rectify the problem.

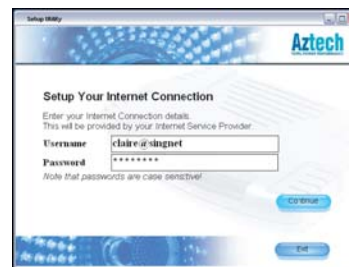


- 2c** After checking, it will prompt you to enter Username and Password to setup the Internet Connection.



Step 3 : Connect to the Internet

- 3a** Enter your Username and Password given by the ISP. Depending on the service where you subscribed, you need to include the suffix "@singnet" or "@singnet1500" or "@singnetbusiness" after the username. Click **CONTINUE** to proceed.



- 3b** Upon successful connection to the Internet, it will display a summary of the settings, you may save or print for future reference. Click **CONTINUE** to proceed



- 3c** It will show info that the internet connection was successfully established. You may click on the cube to start surfing or click EXIT to exit the utility



Note: After the setup, the utility will create a shortcut icon on the desktop. You may use this shortcut to access to DSL Modem web configuration at default IP <http://192.168.1.1>

FOR MACINTOSH USERS:

Important

Please make sure that PC's Network Card TCP/IP Properties and the Internet browser proxy is set accordingly. It is also assumed that the computer/ notebook has the network card already installed. (Note: Settings for TCP/IP may be optional as the DSL Modem has a built-in function that allows the user who has a Static IP Address on the network card to access either the DSL Modem configuration page or surf web)

1a) Configure TCP/IP settings for MAC OS 9.x

- Apple Menu -> scroll down to select Control Panels -> select TCP/IP
- "TCP/IP" dialog box -> select **Ethernet** from "Connect via field" -> select **Using DHCP Server** from "Configure" field
 Connection Via : Ethernet
 Configure : Using DHCP Server

1b) Configure TCP/IP settings for MAC OS 10.x

- Apple Menu -> scroll down to select System Preference -> select Network
- "Preference" dialog box -> key in **Singnet Broadband** in the "Location" field > select **Built-in Ethernet** in the "Show" field
- Click **TCP/IP** tab -> select **Using DHCP** in the Configure field -> click **Apply Now**
 Connection Via: Ethernet
 Configure: Using DHCP Server

2) Settings for Internet Browser Proxy:

- Launch your **Internet Explorer** Browser
- For MAC OS 9.x, click the **Edit** tab -> select **Preferences**
 For MAC OS 10.x, click the **Explorer** tab -> select **Preferences**
- Scroll down to select **Network** -> **Proxies**
- Remove** the check mark in the option box **Web Proxy** -> click **OK**

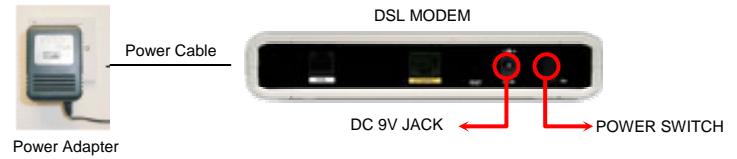
3) For Singnet Filtering Service User (e.g. Family On-line):

If you subscribe to **Singnet Filtering Service** (e.g. Family-on-line), you **must Enable Proxy Settings** after you complete setup on Step)

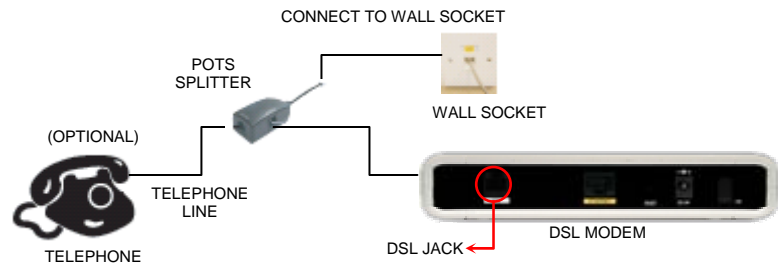
- Launch your **Internet Explorer** Browser
- For MAC OS 9.x, click the **Edit** tab -> select **Preferences**
 For MAC OS 10.x, click the **Explorer** tab -> select **Preferences**
- Scroll down to select **Network** -> **Proxies**
- Click to put a tick for Web Proxy - Type **filter.singnet.com.sg** in the empty space. Click Settings -> type the **port number 8080** in the empty space -> Click **OK**
- Click to put a tick in the option box for Use Web Proxy for all.
- In the space of the empty box - Type the IP Address **192.168.1.1** in the space provided. -> click **OK**

Step 1 : Hardware Setup

- 1a) Connect the power adapter to the power socket and the other end to the DC 9V jack of the DSL Router. Switch on both **POWER** adapter and the **DSL MODEM**.



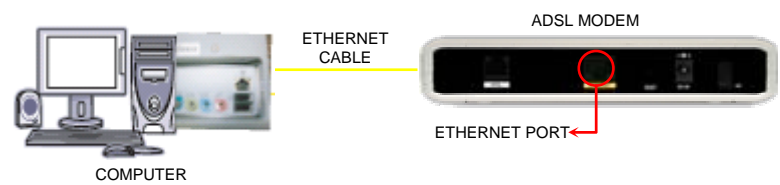
- 1b) Connect one end of the telephone line to the modem labeled **ADSL** and the other end to the pots splitter labeled **MODEM** (optional) to connect a physical telephone, use another telephone line connect from the telephone to the pots splitter labeled **PHONE**.



Note:

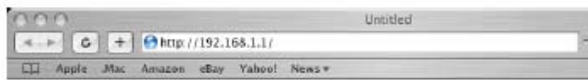
The picture illustrates the connection to a single telephone or fax machine. If you have another telephone or fax machine connected to other telephone wall socket (sharing the same line), please attach another POTS Splitter to telephone wall socket to prevent DSL signal from getting disconnected while surfing.

- 1c) Connect one end of the Ethernet cable to the Ethernet port of the computer and the other end to the **ETHERNET** Port of the DSL Modem.



Step 2 : Login to the Router Configuration Page

- 2a) Launch your Internet Browser.
 Enter "**http://192.168.1.1**" at the address bar as shown below and hit **Enter**.

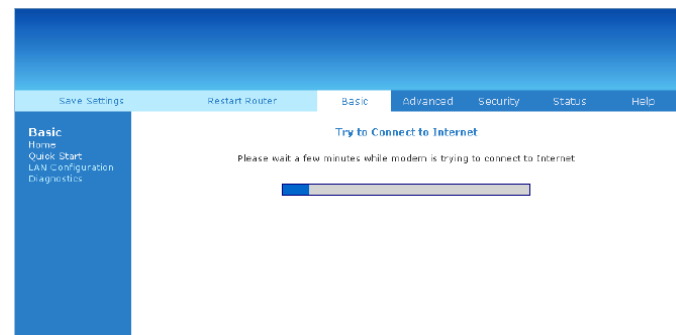


- 2b) The DSL Modem setup configuration page will be displayed.

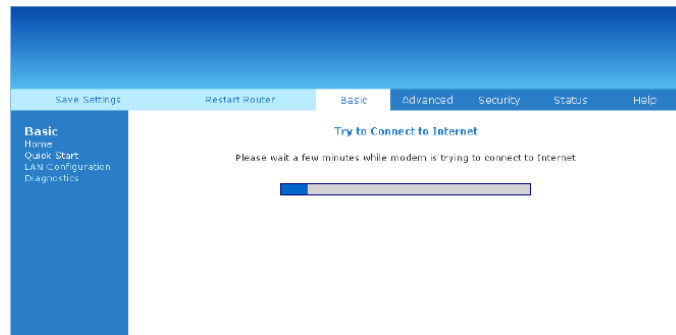


Step 3 : Connect to the Internet

- 3a) Enter your Username and Password given by the ISP. Depending on the service where you subscribed, you need to include the suffix "@singnet" or "@singnet1500" or "@singnetbusiness" after the username. Click **CONNECT** to proceed.



- 3b) The DSL Modem will save the configuration and try to connect to ISP. Please wait for the Internet Connection to be established.



- 3c) Once the connection is established, "**Connection Information**" will show "**Connected**". You may start to surf.

